



**K.R. MANGALAM**  
**GLOBAL SCHOOL**

A child centered education system that focuses on creating engaging learning experiences that result in overall enrichment of the mind that is creative, critical, and progressive.

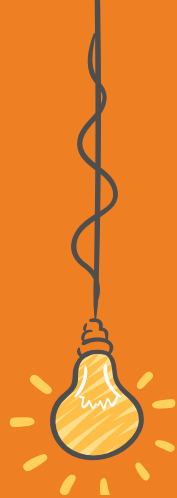
---

**GREATER KAILASH 1,**  
**SOUTH DELHI**

---

*An IB World School*

[www.krmangalam.global](http://www.krmangalam.global)



# DISTINCTIVE FEATURES OF THE SCHOOL

A student teacher  
ratio of 1:10

Focus on development of  
skills over content

Flexible seating to  
encourage differentiation

Students' Wellbeing

CASEL Framework

After School Programmes

IB Trained and  
Experienced Teachers

Student Led Family  
Conferences

Guest Speakers, Field  
Trips and Workshops

Vast range of books  
and digital media to  
promote International  
Mindedness

Regular and Open  
communication with parents  
through coffee morning and  
open house

Carefully designed  
effective and  
continuous  
assessments

Differentiated learning  
places students at the  
heart of its approach

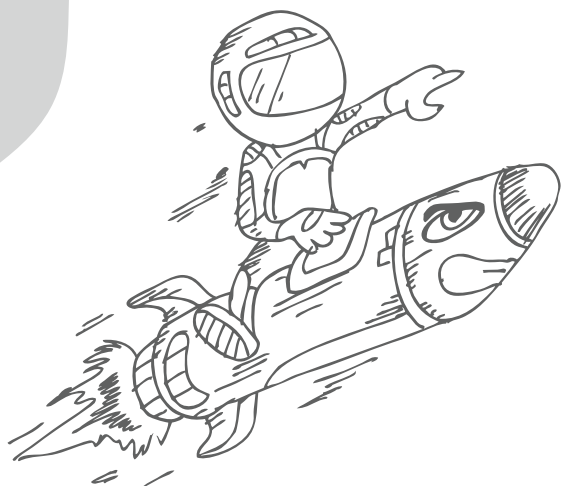
Day  
Boarding  
facilities

Professional  
Development for  
teachers and parents

Emphasis on academic  
writing skills as well as  
practices that promote  
academic honesty

Curated Curriculum  
encourages cultivation of  
unique skills, interests,  
attitudes, and appreciations

Student Exchange  
Programmes to provide a  
cross-cultural exposure  
and a global perspective  
to the students



## WE ASPIRE TO INSPIRE

The **K.R. Mangalam Global School** is committed to imparting quality education to help children grow into successful human beings by imbuing them with the confidence to be the catalysts of change. The school aims to equip the students with the skills and competencies required in today's world. We understand that the “generation next” needs to be brought up in a global environment, discussing global concerns, acquiring global competencies and aspiring to be global leaders. With our world class infrastructure, global mindset and deep understanding of contemporary educational scenarios, we intend to best facilitate this process collaboratively with our parents.

### OUR VISION

To create an empowered, inspired and progressive community of learners who achieve and contribute positively towards humanity at large.

### OUR MISSION

- To develop and nurture global citizens.
- To inculcate an understanding of interconnectedness of all life and the living. To develop compassion beyond one's immediate surroundings.
- To understand and respect the differences.
- To help acquire skills of Critical thinking, Communication, Collaboration, Creativity.

### MOTTO

Educating contemporary minds with futuristic mind sets and dynamic outlook.



**15k**  
Students



**8**  
Branches



**1000**  
Teachers



**1**  
University



# K.R. MANGALAM GLOBAL SCHOOL

is a step towards a global initiative in education. The 21st century world places an imperative demand on schools to venture out of their traditional cocoons and adopt a proactive mindset to address the challenges of a rapidly changing world.



## International Baccalaureate Curriculum

The International Baccalaureate is a curriculum inspired by insights of some of the progressive educationists such as John Dewey, A.S Neill, Jean Piaget, and Jerome Bruner. What conspired because of their philosophy and researched-based discoveries was a globally minded education, based on student centered learning and interactive curriculum.



## Primary Years Programme

- Student Centric.
- Differentiated Learning.
- Focus on knowledge, skills and disposition.
- Assessment 'for', 'as' and 'of' learning.
- Trans disciplinary Learning.
- Constructivism
- Critical Analysis
- Language development through Play.
- Student agency honoured.
- Student action is an integral part of the learning process.

# SALIENT FEATURES

## Middle Years Programme

- Assessment patterns support development of Critical Thinking and not rote learning.
- Active learning through Community Service.
- Emphasis on Project Based Learning that is more focused and assessment is criteria based. It is included in the final award of certificate.
- Greater emphasis on Concept Based Learning rather than rote learning.
- More Balanced. Allows students to demonstrate their learning through coursework rather than just year-end exams or practical.
- Only Curriculum to support young learners to learn 'citing and referencing' and importance of 'Academic Integrity' very early in life.



## Diploma Programme

- Research and Application Based
- Tutors not required. Students required to demonstrate a balance in their work and study time.
- Nurtures Global citizens with world knowledge
- Data Booklet is provided to the students with formulas and values which the students use to demonstrate understanding and application of the topic
- Coursework based where students are given ample choice to select their research area. Key challenge is quality of research assignment rather than quantity.
- Final result is grade points (IB provides equivalence certificate' with converted percentage)
- Wider range of subject choices, combinations. Greater flexibility



## OUR VALUES!

The sole aim of IB programme is to develop global citizens who, by recognizing their common humanity and shared guardianship of the planet, help to create a better and more peaceful world. We believe these values can help individuals and groups become responsible members of local, national and global communities.



### Open Minded

We critically appreciate our own cultures and personal histories, as well as the values and traditions of others.

We seek and evaluate a range of points of view, and we are willing to grow from the experience

### Caring

We show empathy, compassion and respect. We have a commitment to service of mankind and we act to make a positive impact in the lives of others and in the world around us.

### Balance

We understand the importance of balancing different aspects of our lives—intellectual, physical, and emotional—to achieve well-being for ourselves and others. We recognize our interdependence with other people and with the world in which we live.

### Reflective

We thoughtfully consider the world and our own ideas and experiences. We work to understand our strengths and weaknesses in order to support our learning and personal development. This further helps in enhancing our growth.

### Risk-Takers

We approach uncertainty with forethought and determination. We work independently and cooperatively to explore new ideas and innovative strategies. We are resourceful and resilient in the face of challenges and change.

### Inquirers

We nurture our curiosity, developing skills for inquiry and research. We know how to learn independently and with others. We learn with enthusiasm and sustain our love of learning throughout life.

### Knowledgeable

We develop and use conceptual understanding, exploring knowledge across a range of disciplines. We engage with issues and ideas that have local and global significance.

### Thinkers

We use critical and creative thinking skills to analyse and take responsible actions on complex problems. We exercise initiative in making reasoned, ethical decisions.

### Communicators

We express ourselves confidently and creatively in more than one language and in many ways. We collaborate effectively, listening carefully to the perspectives of other individuals and group at large.



# EARLY YEARS

Experiences during the early years of life are most important as they lay the foundation for all the future learnings. The brain and body develop faster than at any other point in a child's life. The fundamentals of social development lay its roots here, in the Early Years. Children are naturally inclined to explore, to discover, to play and to make connections between self, others and their entire surroundings. There is a sustained, complex and dynamic interplay between learning and development that requires a well-considered early years educational experience for young children and their families. At KRMGS early years learners are given the opportunity to explore freely and engage with the stimuli present in their environment. The focus is on play which encourages expression of students' creativity and imagination. Children engage in many self and teacher-initiated activities that develop the whole child.

## Early Years Learning Focuses on Five Areas of Development i.e.

Personal, Social and Emotional Development

Communication and Language



Physical Development

Understanding the World

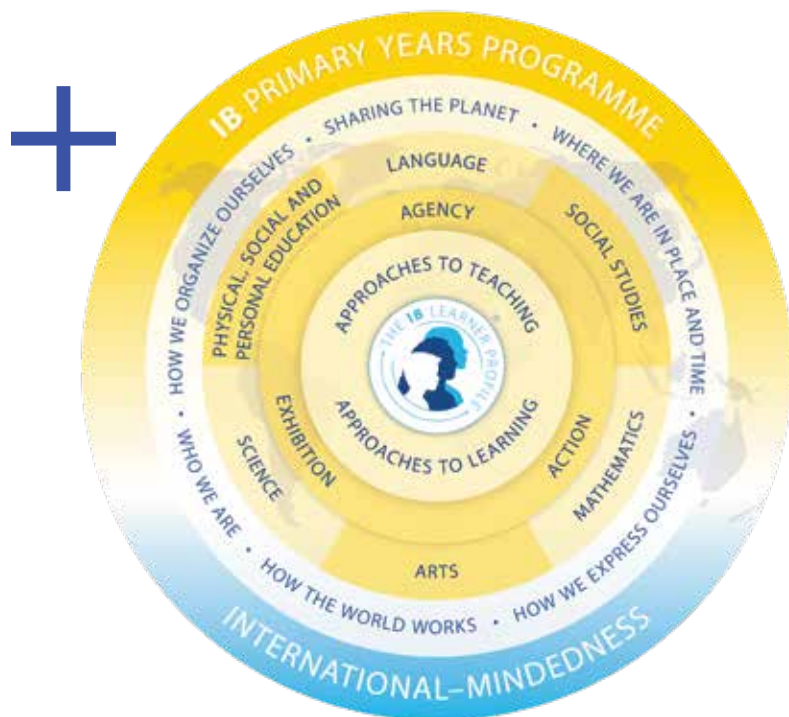
Expression through Art



Nursery to Grade 5

The International Baccalaureate Primary Years Programme (PYP) is designed for students aged 3 to 12 years and focuses on the total growth of a developing child, encompassing social, physical, emotional, and cultural needs in addition to academic development.

The PYP draws on research and experiences of key influential educationalists to create a relevant, engaging, challenging and significant educational framework for all children.



The **Primary Years Programme** at K.R. Mangalam Global School honours students' "choice and voice" in the classroom, promoting student agency by planning differentiated learning experiences and small group work for their learners. The prior assessments and diagnostic assessments data are used by the teachers to plan differentiated learning experiences for their learners. Teachers constantly keep a track of the learners' abilities and interests using running records and use this data to create learning spaces, plan group work, and use different resources in the class to engage the learners. This supports our learners to feel

motivated and self-directed in their learning and develop different skills. An important pillar of the PYP, the learning community, is formed by the collaborative efforts and cooperation of all the stakeholders. Both parents and school community work together to form conducive learning environments to support the needs of the various learners. "One on One" sessions with the parents and teachers along with group and pair work in the classroom promote healthy student-teacher, teacher-parents, and peer-peer relationships.





**PREPARING STUDENTS FOR SUCCESS IN  
HIGHER EDUCATION AND TO BE ACTIVE PARTICIPANTS  
IN A GLOBAL SOCIETY.**





**ENCOURAGING STUDENTS TO BECOME  
CREATIVE, CRITICAL, AND REFLECTIVE THINKERS WITH  
INTERNATIONAL-MINDEDNESS.**





# MIDDLE YEARS PROGRAMME

(CANDIDATE SCHOOL)

Grade 6 to 10

The Middle Years are a challenging time of transition for learners as they move from childhood to adolescence, seeking to gain greater confidence in dealing with the world. This crucial period of personal, social, physical, and intellectual growth is marked by uncertainty on one hand and increasing maturity on the other.



The **Middle Years Programme (MYP)** builds on a student-centered foundation laid in the Primary Years Programme. It is built on developing what students know into an exciting journey of exploring more through research, application and active communication. The Middle Years Programme (MYP) at K.R. Mangalam Global School helps the child to develop synergistic thinking while acquiring a deeper understanding of disciplines. They expand their understanding of languages and cultures in significant personal, local and global context acquiring knowledge and skills through broad & balanced concurrent learning.

Students engage in learning experiences, planned in response to the inquiry questions and reflect on their learning and learning experiences.

K.R. Mangalam Global School is a Candidate School\* for the Middle Years Programme. This school is pursuing authorization as an IB World School. These are schools that share a common philosophy—a commitment to high quality, challenging, international education that K.R. Mangalam Global School believes is important for our students.

\*Only schools authorized by the IB Organization can offer any of its four academic programmes: the Primary Years Programme (PYP), the Middle Years Programme (MYP), the Diploma Programme, or the Career-related Programme (CP). Candidate status gives no guarantee that authorization will be granted. For further information about the IB and its programmes, visit [www.ibo.org](http://www.ibo.org)





# DIPLOMA PROGRAMME (CANDIDATE SCHOOL)

Grade 11 & 12

K.R. Mangalam Global School offers the International Baccalaureate Program for students in the final two years of their secondary schooling. A vision grounded in global perspective, the IB's mission to create global citizens who are life-long learners mirrors K.R. Mangalam Global School's aim to create progressive thinking individuals with a global outlook. At the core of the program, however, is Theory of Knowledge (TOK), the Extended Essay (EE) and Creativity-Activity-Service (CAS). This trio makes up the heart of the DP program and offers students rigorous and challenging ways of thinking, articulating and acting on their knowledge and beliefs.



KRMGS invests a lot in cultivating independent, creative and critical thinkers who are made ready to take on undergraduate programmes at the world's best educational institutes. IB DP is recognized by the Universities all over the world to be the most challenging and uniquely placed to meet their eligibility requirements. The IB Diploma Programme is recognised by all the universities in India. Students can take the entrance test for professional courses like Medicine and Engineering. Statements recognizing the IB Diploma Programme can be downloaded from "Guidance on university recognition in India (2016)" a guide available on [ibo.org](http://ibo.org) – university recognition page.

K.R. Mangalam Global School is a Candidate School\* for the Diploma Programme. This school is pursuing authorization as an IB World School. These are schools that share a common philosophy—a commitment to high quality, challenging, international education that K.R. Mangalam Global School believes is important for our students.

\*Only schools authorized by the IB Organization can offer any of its four academic programmes: the Primary Years Programme (PYP), the Middle Years Programme (MYP), the Diploma Programme, or the Career-related Programme (CP). Candidate status gives no guarantee that authorization will be granted. For further information about the IB and its programmes, visit [www.ibo.org](http://www.ibo.org)

# INFRASTRUCTURE AND FACILITIES

KRMGS is located in the heart of South Delhi with 5 acres spread of peaceful campus. This world-class campus offers state-of-the-art facilities including Science Labs, Libraries, Performing and Visual Arts studios, Early Years play centres, Swimming Pool, Basket Ball Court, Lawn Tennis Court, Skating Rink, Football Court, Running Track, Play-scape and slides in the outdoors; and Badminton, Squash, Table Tennis, a Shooting Range, Golf, Gymnastics, Taekwondo Arena, Chess and other Board Games in a dedicated Indoor Sports facility.



## A Safe And Secure School Campus

- A three-tier security system with CCTV cameras monitored in the server room
- A clean and sanitized learning environment for children created using globally recognized pandemic protocols
- Safety guidelines training for students and staff awareness programs

## Transport

- We provide transport facilities to all students, covering all areas across Delhi. The presence of a certified conductor and bus driver, a female attendant, along with safety tools like first-aid kit, fire extinguisher and GPS tracking ensures the safety of our students in the air-conditioned buses

## Meals

- We understand the importance of a healthy, wholesome and balanced meal for our students. The breakfast, lunch and snacks are prepared with utmost hygiene in our in-house kitchen, keeping in mind the nutritious needs of our students

## Day boarding

- KRMGS provides a wholesome experience for children of working parents and nuclear families who are in school for longer hours. Children spend time till 7:00 p.m. engaged in creative pursuits, developing their skills and becoming independent learners





## SPORTS EDUCATION PROGRAMME

At K.R. Mangalam Global School, we believe that sports are an integral part of the educational process and have integrated sports firmly into our curriculum. Our Sports Education Programme (SEP) places emphasis on the development of knowledge, attitudes and skills related to a range of physical and health related activities.

### The Programme aims to encourage students to:

Understand how strategies can assist when participating in physical activities.

Learn about body control and spatial awareness.

Master new skills and techniques in a variety of physical activities & manipulate sports equipment or apparatus.

Use co-operative behavior in order to function as part of a group or team.

Recognize the importance of fair play and sportsmanship.

Use proper safety precautions when engaging in physical activities.



# THE PERFORMING ARTS



Indian Dance

Western Dance

Vocal Training

Musical Instrument Training

Theater and Drama



# THE VISUAL ARTS

Painting

Sculpting

Pottery

Drawing

Sketching



# INCLUSION

We are proud to create and facilitate a diverse and culturally rich learning environment for our different learners. By promoting open-mindedness, acceptance, and tolerance, we aim to create an inclusive and harmonious place.

## English as an Additional Language (EAL)

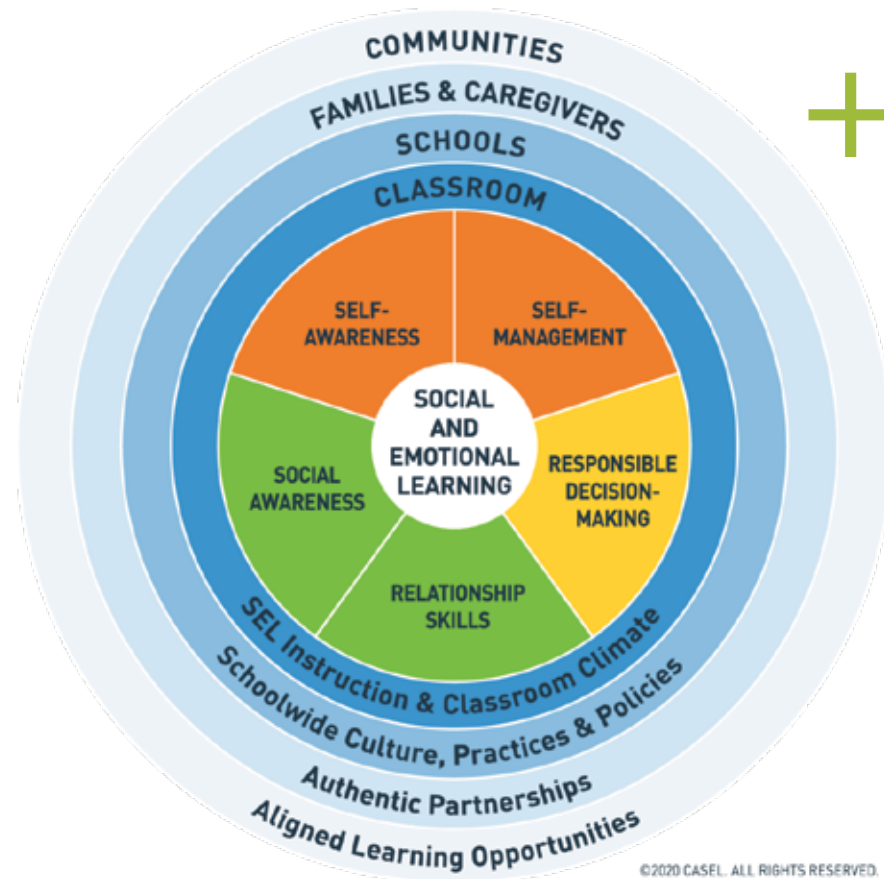
One to one support and intensive skill-based support from EAL professionals, class and specialist teachers help EAL students to access school curriculum in a mainstream classroom environment.

## Additional Learning Support (ALS)

Our team of ALS professionals pay attention to the needs of the various learners and provide support to students so they can make the most of their education.



We practice the CASEL framework with its 5 competencies - self-awareness, self-management, social awareness, relationship skills, and responsible decision-making through circle time, goal setting, meditation, story time, reflective writing, emotional vocabulary, etc. These engagements address the socio-emotional needs and competencies of the learners in an informed and respectful manner, helping them to become resilient individuals with high emotional quotient.



# IB HISTORY AND ACCEPTANCE

## IB Acceptance

All universities in India accept the IB Diploma as equivalent to Class 12 qualification from an Indian board. However, acceptance alone does not guarantee entry into a course. Entry is based on competition as places may be limited and some courses may have additional selection requirements. It is advisable to check with the institution of interest to determine the entry requirements for particular courses of study.



The IB Diploma has been recognized by the AIU as an entry qualification to all universities in India since 1983 and renewed in 2010. According to AIU: “The International Baccalaureate Diploma has been equated with +2 stage (Grade 12) qualification of an Indian Board since 1983. Students intending to join Indian Universities after completion of their IB qualifications are eligible to pursue Bachelor’s degree programme at Indian Universities. Those intending to join Professional Degree programmes are required to have studied the subjects of Physics, Chemistry, Biology/Mathematics and English at the qualifying level.” (AIU, Dec, 2010).





# ADMISSIONS

## The Admission Process

- Apply for Admission by filling the form on our Website
- Visit the school for a Campus Tour
- Meet the Admissions Head to understand more about the school and admissions
- Meet the IB Coordinator to understand about the Curriculum
- Assessment (For Grade 6 & above admissions)
- Formal Interaction with the Principal
- Wait for our email to inform you about your admission result
- Submit the supporting documents & pay the fee to confirm your seat!

## Qualifying Age as on 1st August of the academic year admission applied for:

- 2yrs old for Pre-Nursery
- 3yrs old for Nursery
- 4yrs old for KG
- 5yrs old for Grade 1

## For Admissions

Call: +91 9718858181

Email at [admission@krmangalam.global](mailto:admission@krmangalam.global)

Apply through [www.krmangalam.global](http://www.krmangalam.global)

# TESTIMONIALS

“

“I really appreciate Ms. Richa's efforts and how patiently she deals with the kids. It is not easy and the best part is her smile. A smile can heal anything and it is what she does, totally!”

**-Ms. Suman Rawat & Mr. Ajay Singh Rawat**  
(Parents of Kavyaansh Rawat)

“

“Very nice, my son enjoys online classes and he is gaining confidence day by day...”

**-Mr. Raghu Rawat**  
(Father of Jalaj Rawat)

“

“I love how the teachers engage children in the activities. I can see my child learning new things every day and the best part is he is enjoying every bit. The school shares regular updates about the learning, infrastructural development, new activities, etc. It's a pleasure to see such a dedicated team of academicians and management working to provide the best environment for children, ensuring that we parents are not left behind by involving us equally in imparting education. The experiential learning approach of IB Curriculum is the highlight of KRMGS. It enables us move forward from rote learning and conventional techniques of education. Looking forward to have wonderful learning years ahead for my child!”

**-Ms. Jyoti Saxena**  
(Mother of Rivaan Saxena from Grade 2)





**K.R. MANGALAM**  
GLOBAL SCHOOL

N-Block, Nandi Vithi Road,  
Greater Kailash-1, New Delhi 110048



+91-9718858181



info@krmangalam.global