



# NORTHLAND

## INTERNATIONAL SCHOOL



FARIDABAD | GREATER FARIDABAD | PALWAL

WE GIVE SPECIAL  
**TODAY**  
FOR BETTER  
**TOMMOROW**  
TO YOUR  
**SPECIAL ONE!**



----- PROSPECTUS -----

# ABOUT US

We, at **NORTHLAND INTERNATIONAL SCHOOL** allow a free and natural growth to ensure genuine development. The teachers here are not taskmasters but helpers and guides. We believe that knowledge can be acquired through various sources.

The knowledge is there within and the teachers not only strive to show the child where it is and how it can be habituated to rise to the surface. Our teachers try to pay individual attention to every learner and give due regard to the particular way in which each learner wants to make progress.

The projects are designed in such a way that each child gets the opportunity to showcase his own talent in a particular field.

Even when the children work in a group, the teacher studies the group dynamics and offers learning materials according to the needs of the participants in that particular group.

We are aware that, we have to gradually steer the child from the stage of gathering information, to the stage of assimilation and finally take him to the final stage of utilization of that information. We consider the learning process to be complete when we know that the new information acquired by our learner has been so well integrated that he can utilize it and apply it in any new situation.



# VISION & VALUES



## OUR MISSION

is to nurture lifelong learners as well as inspire them to accept global citizenship in a supportive academic environment.



## OUR VISION

is to be a vibrant community of learning and ambition where together we support each other to reach our full potential in life.



## OUR EDUCATION PHILOSOPHY

is to produce those global citizens who are physically strong, mentally sharp, emotionally balanced, socially progressive, and equally good anywhere in the world.

# ACADEMICS

Our multidimensional academic programs, set the students free from conventional boundaries, allowing them to learn deeply from many perspectives.

## **The benefits of this academic freedom are enormous.**

By stretching themselves beyond traditional academic pathways, they will grow intellectually and creatively, expand their problem-solving capabilities, and become prepared to affect a complex world.

Their critical thinking skills will be honed as they prototype innovative solutions, and receive firsthand experience through seminar-style and project-based learning.

At Northland International School, our rigorous academic approach goes beyond developing scholarly knowledge to help them uncover and actualize their passion and vision.

Ultimately, they will forge a unique path that will forever change the way they investigate and create throughout their life.

## **Initially the school academic program is divided in below mentioned three categories:**



### **PRE-PRIMARY (NURSERY, L.K.G & U.K.G)**

Pre-primary education is considered to be very important for the child as it is the first step towards entering the world of knowledge as well as a healthy and purposeful life.

Pre-primary education helps children to become more independent and confident as well as promoting the all round development of the children.



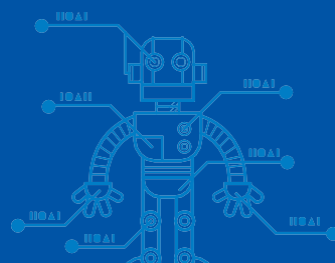
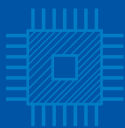
### **PRIMARY (I-V)**

Primary Education is the initial stage of formal education and has as its basic aim to create, establish and offer opportunities to all children, to achieve a balanced cognitive, emotional and psychomotor development.

The National Curriculum Framework and the teaching methodologies adopted at Primary levels to emphasize the learning process and focus on strategies which assist pupils in learning how to learn and in developing their critical and creative thinking.

### **MIDDLE (VI-VIII)**

The middle level education prepares students in grades 6-8. We combine a strong foundation of teaching methodology with many diverse classroom experiences for innovative, research based, hands-on learning.



# BEYOND ACADEMICS

We prepare students for the new and emerging challenges of the 21st century.

Life at NIS includes just about everything that you do, during your school years as a student from academics to sports, from drama to travel.

Each child is encouraged to take part in co-curricular activities, enabling him to spread his/her wings wider.

We offer a diverse range of activities, from experiential learning programs to numerous athletics endeavors, arts experiences, and student activities and clubs.

## SPORTS

Every student is expected to take part in the sport and fitness programmes.

The professional coaches and instructors ensure the provision of an appropriate environment where the corporeal well being of the students is taken care of.

Regular competitions and sports events are organized to expand the potential of the budding Nisians in their field of interest.

Various inter-house, inter-school and intra-school sport activities are carried out in our annual sports day.



## MUSIC AND DANCE

Northland International School provides training in a variety of disciplines in music and dance giving the children the freedom to choose and express themselves.

From Indian classical-Indian folk to western dance and fusion are encouraged, musical instruments include drums, tabla, congo, dholak, guitar, harmonium and casio synthesizer.

In vocal there are western, hindustani classical and light fusion to choose from. The universal language of music and dance forms helps students from across communities to bond and provides the perfect nutrient for the mind, body and soul.



## CREATIVE ARTS

The Art room is dedicated to art and related activities.

Training is provided in painting, drawing, craft work and clay modeling.

Art activities are incorporated into the students academic time table whereby they have an opportunity to learn the basics of these skills by being exposed to them, regularly.



# FACILITIES

## INSPIRING CAMPUS

School is located in the vibrant and picturesque location of Sector-88, Greater Faridabad.

The school is having well lighted and spacious classrooms with a computer, Science & Maths lab, activity centers and administrative block. Beautiful lawns and open space ensure the perfect balance between teaching, learning and joyful experiences.



## CONVENIENT TRANSPORT

The school bears an impressive fleet of buses equipped with mobile phones, speed governor, GPS, CCTV's & Dedicated Support staff.

Safe commuting of the children is our utmost concern so we will not recommend travelling of students by private vehicle.



## LIBRARY

The collection of books and CD-ROMs supplement the student's inquisitive mind to discover and develop their love for assimilating knowledge.

A very extensive references section helps students work on multi-dimensional projects.



## SCIENCE LAB

To enhance the learning ability and skill. The school has an independent laboratory system. State-of-the-art lab give the student's extensive practical experience to supplement the theories learnt in the classrooms.

The laboratory is up-to-date and well-equipped with all the desired instruments and the best apparatus for conducting experiments for individual learning and innovation.



## SMART CLASS

Experts believe that a person is able to retain more if the medium of instruction includes an audio-visual gesture.

For the same, the school system has incorporated smart classroom that use presentations and visual content to enhance the learning experience.



## MATHS LAB

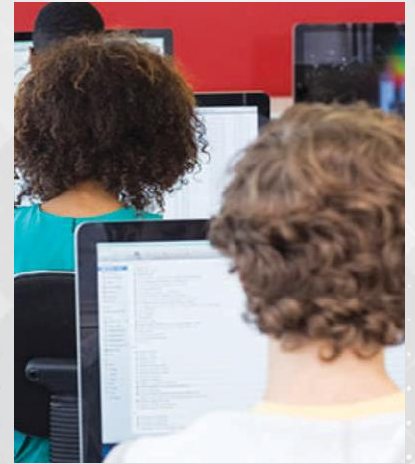
Math Lab facilitates the learning of Mathematics through activities. It hones the skills of the students in Mathematics and makes it more interactive. Mathematics comes alive and learning becomes interesting.



## E-LEARNING

The computer lab, equipped with the latest information technology gives the students an edge in the fast evolving IT field. The computer lab facilitates senior students to acquire programming skill.

Primary class students work on specially designed CAL (Computer Aided Learning) packages. It is fun to watch our Pre-Primary children drawing, designing & working comfortably on the computers.



## SCHOOL INFIRMARY

Northland International School has a well equipped infirmary that provides first aid to the student in need, under the supervision of medical emergency attendant. The student's basic physical development is checked and reported terminally by the school.



## DAY BOARDING

Keeping in mind the requirements of the working parents who look forward to quality time utilization of their wards, we provide day boarding facility. This will be available for the school students only from class I onwards.



# ADMISSIONS

## ADMISSION OVERVIEW

Northland International School follows a fair and transparent admission process in accordance with the rules and norms set by the Directorate of Education.

Admission is marked by a complete absence of class distinctions, discrimination of any kind or any other trivial privileges like donations.

The children of all states are admitted into the Pre-School. Admission to other classes is decided by conducting relevant tests.

The Principal reserves the right to assign any pupil the class for which she thinks the child is best suited.

## ADMISSION PROCEDURE

### ADMISSION PROCEDURE (FOR THE SESSION 2020-21)

1. Admission forms can be downloaded from the school website and is to be submitted at the school counter between 9 a.m. and 3 p.m. on all working days.
2. The form has to be filled properly. Please ensure that you fill all the columns and attach the relevant documents.
3. After scrutiny, the date of interaction will be intimated to you through e-mail and telephonically.
4. Registration is no guarantee of admission.
5. A few parents will be called every day. Both the parents must report with the child as the admission will not be confirmed in the absence of either.
6. Submission of application or interaction does not ensure admission. The admission will be granted on the mutual understanding between the school and the parents.
7. The selected students' list will be put up daily for the children interviewed that day by evening, both on the school notice board and our website- [www.nis88.com](http://www.nis88.com).
8. The admission fee for the selected students is to be deposited within 3 days from the date of selection.
9. Admission to classes I onwards would purely be based on merit in the entrance test.
10. The age criteria as on April 1, 2020 for each class is as follows.

## ELIGIBILITY CRITERIA

CLASS	ENTRY AGE
Nursery	: 2 yrs and 6 months as on 1st April 2020
LKG	: 3+ as on 1st April 2020
UKG	: 4+ as on 1st April 2020
Class 1	: 5+ as on 1st April 2020
Class 2	: 6+ as on 1st April 2020

## DOCUMENTS REQUIRED

CLASS	DOCUMENTS REQUIRED
Nursery - UKG	* Self attested photocopy of Birth Certificate.
	* Passport size photographs of child, mother & father.
I - VIII	* Self attested photocopy of Birth Certificate.
	* Passport size photographs of child, mother & father.
	* Photocopy of previous class result.
	* Transfer Certificate of previous school. (II onwards)
	* Self attested Photocopy of Aadhar Card