

"Educate  
contemporary minds  
with a futuristic  
mind set and a  
dynamic outlook"

## CONTACT US

K.R. Mangalam Global School, Opposite D-  
23 Near South City Club, Gurugram  
Tele - 0124-2382596-97, +91-8750045132

[krmglobal@krmangalam.com](mailto:krmglobal@krmangalam.com) |  
[admissions@global.krmangalam.com](mailto:admissions@global.krmangalam.com)

# K. R. MANGALAM GLOBAL SCHOOL

An IB World School



# ABOUT US...

**"What we are today  
comes from our  
thoughts of yesterday,  
and our present  
thoughts build our life  
of tomorrow."**

**YASH DEV GUPTA**

Chairman, K.R. Mangalam Group

## Our Vision

To develop a community of agile learners and educators who will work in tandem to cultivate a wholesome learning experience for the citizens of the future.

## K. R. Mangalam Group

K.R. Mangalam is one of the most renowned schools in India, known for its quality and unique teaching methods. Introducing the young learners to the world around them and guiding them with the practical application of knowledge from people of other communities and workplaces, is what we work towards achieving.

## Our Mission

Our mission is to raise learners who have a strong moral fibre; are self reflective, resilient and responsible individuals with strong sense of identity who strive to be agents of change for building a more equitable and humane society.

## ABOUT INTERNATIONAL BACCALAUREATE

The International Baccalaureate (IB) offers four high quality, challenging educational programmes to students aged 3 to 19.

The IB programmes focus on fostering critical thinking and building problem-solving skills, while encouraging diversity, international mindedness, curiosity, and a healthy appetite for learning and excellence.



### WHY IB?

The International Baccalaureate® (IB) programmes aim to do more than other curricula.

The IB gives students distinct advantages by building their critical thinking skills, nurturing their curiosity and their ability to solve complex problems.

## OUR PROGRAMS

### Early Years Programme

At K.R.Mangalam Global School, early years learners are given the opportunity to explore freely and engage with the stimuli present in their environment. The focus is on play which encourages expression of students' creativity and imagination. Children engage in many self and teacher-initiated activities that develop the whole child.

### Primary Years Programme

The IB Primary Years Programme (PYP) for children aged 3 - 12 nurtures and develops young students as caring, active participants in a lifelong journey of learning.

The PYP offers an inquiry-based, transdisciplinary curriculum framework that builds conceptual understanding. It is a student-centered approach to education for children aged 3-12. It reflects the best of educational research, thought leadership and experience derived from IB World Schools.





## PRIMARY YEARS PROGRAMME (NURSERY TO GRADE 5)

The International Baccalaureate Primary Years Program (PYP) caters for students aged 3–12. It lays salience on the total growth of the developing child, touching hearts as well as minds and encompassing social, physical, emotional and cultural needs in addition to academic development.



“

***Producing  
leaders of  
change through  
education and  
encouragement.***

”

## THE PILLARS IB PYP CURRICULUM FRAMEWORK

The transdisciplinary model extends across all three pillars of the PYP curriculum framework—the learner, learning and teaching, and the learning community.

- The learner: describes the outcomes for individual students and the outcomes they seek for themselves (what is learning?)
- Learning and teaching: articulates the distinctive features of learning and teaching (how best to support learners?)
- The learning community: emphasizes the importance of the social outcomes of learning and the role that IB communities play in achieving these outcomes (who facilitates learning and teaching?)

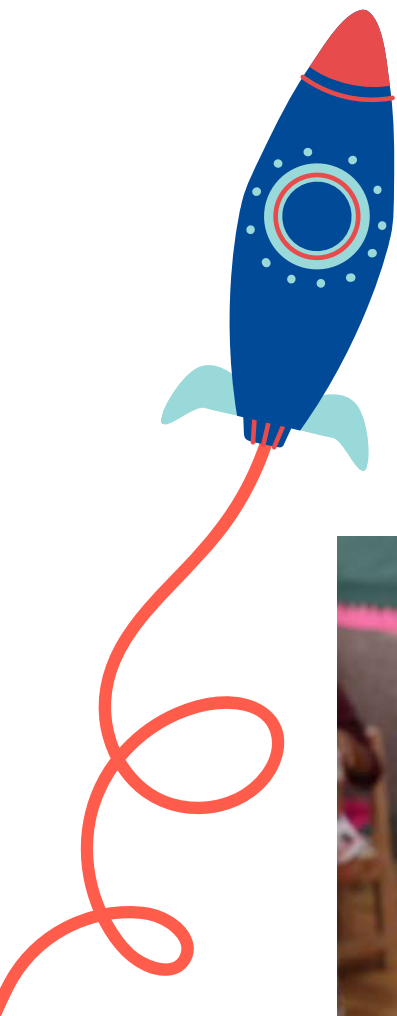


# Primary Years Programme At KRMG



- Student Centric.
- Differentiated Learning.
- Focus on knowledge, skills and disposition.
- Assessment 'for', 'as' and 'of' learning.
- Trans disciplinary Learning.
- Constructivism
- Critical Analysis
- Language development through Play.
- Student agency honoured.
- Student action is an integral part of the learning process.



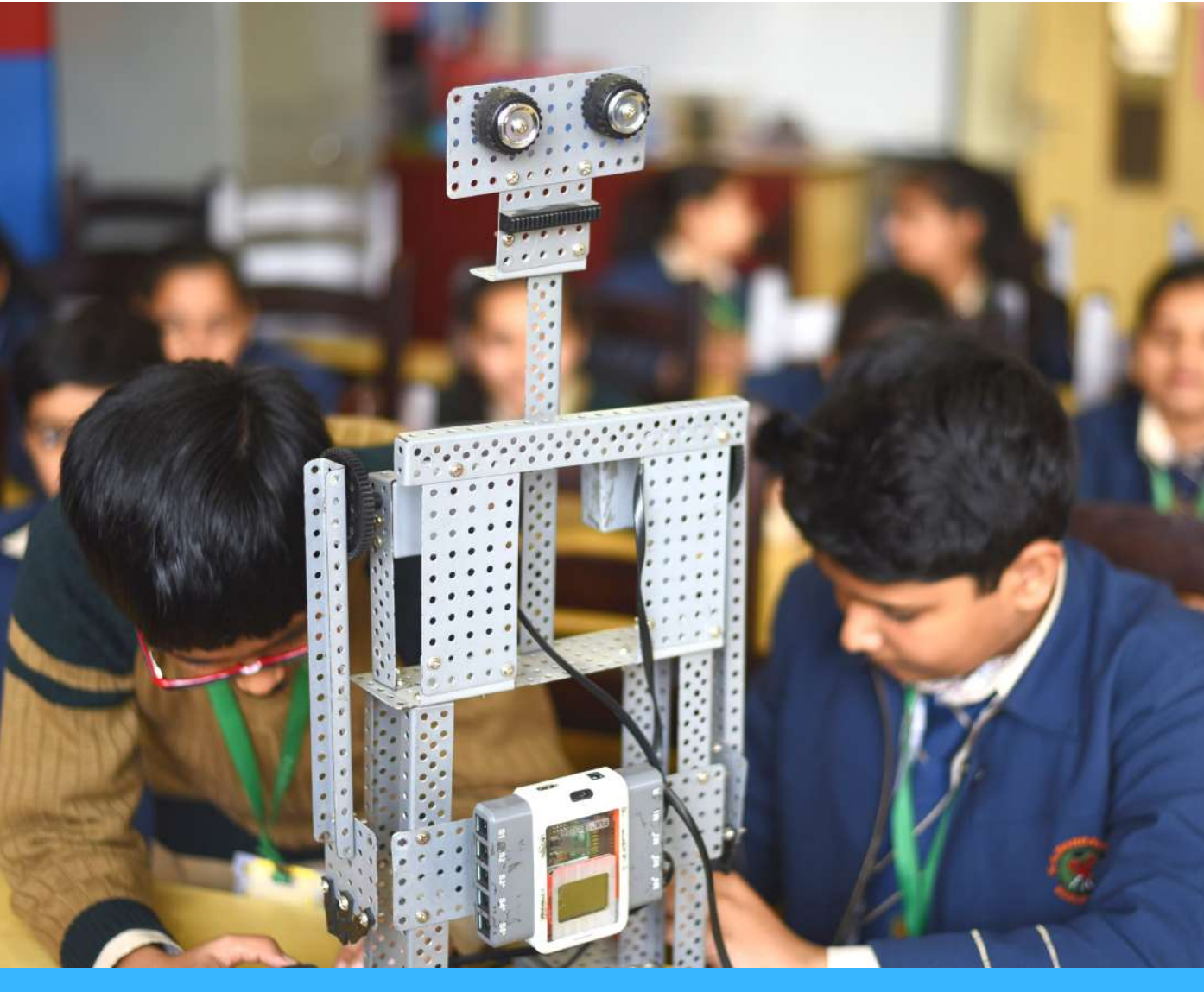


# Towards a brighter future for all children





# Embracing Emerging Trends in Education



At KRMG we place in center the increased need of collaborative learning.

- Skills over content
- Pedagogy paralled with flexible learning environment
- Inquiry based learning engagement



# OUR STAND APART FEATURES

---

- Focus on Collaborative Learning



- International Mindedness to Facilitate Global Citizens
- IB Trained and Enthusiastic Facilitators



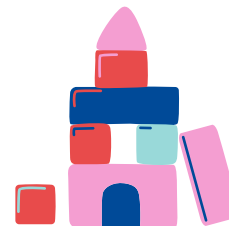
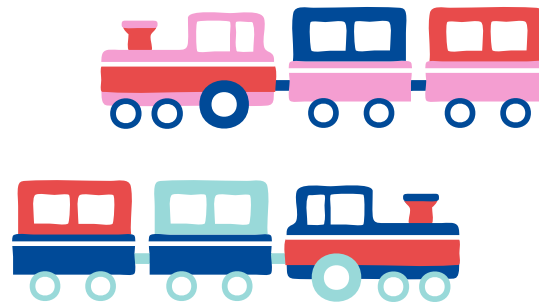
- Inquiry Based Classrooms





# Sports Education Programme

Our Sports Education Programme (SEP) places emphasis on the development of knowledge, attitudes and skills related to a range of physical and health related activities.



The Programme aims to encourage students to:

- Learn about body control and spatial awareness
- Master new skills and techniques
- Use co-operative behavior
- Recognize the importance of fair play and sportsmanship.
- Use proper safety and precautions



## Visual and Performing Arts

- Western and Indian Dance
- Drama and Theatre
- Vocal Training
- Drawing and Painting
- Pottery
- Sculpting







**K.R. MANGALAM**  
GLOBAL SCHOOL

## ADMISSIONS

- Apply for Admission by filling the form on our Website
- Visit the school for a Campus Tour
- Meet the Admissions Head to understand more about the school and admissions
- Formal Interaction with the Principal
- You're ready to join our community. Book your seat!



## FOR ADMISSIONS

K.R. Mangalam Global School, Opposite  
D-23 Near South City Club, Gurugram  
Tele - 0124-2382596-97, +91-8750045132  
[admissions@global.krmangalam.com](mailto:admissions@global.krmangalam.com)



**AN IB WORLD  
SCHOOL**

**COME VISIT US**

**K.R. Mangalam Global School,  
Opposite D-23 Near South City  
Club, Gurugram**

---

**Tele - 0124-2382596-97, +91-8750045132  
Email - [info@krmangalam.global](mailto:info@krmangalam.global)**

